

MONTHLY MEMBERSHIP PROGRESS REPORT

District 4 C5

Results as of: 5/31/2024

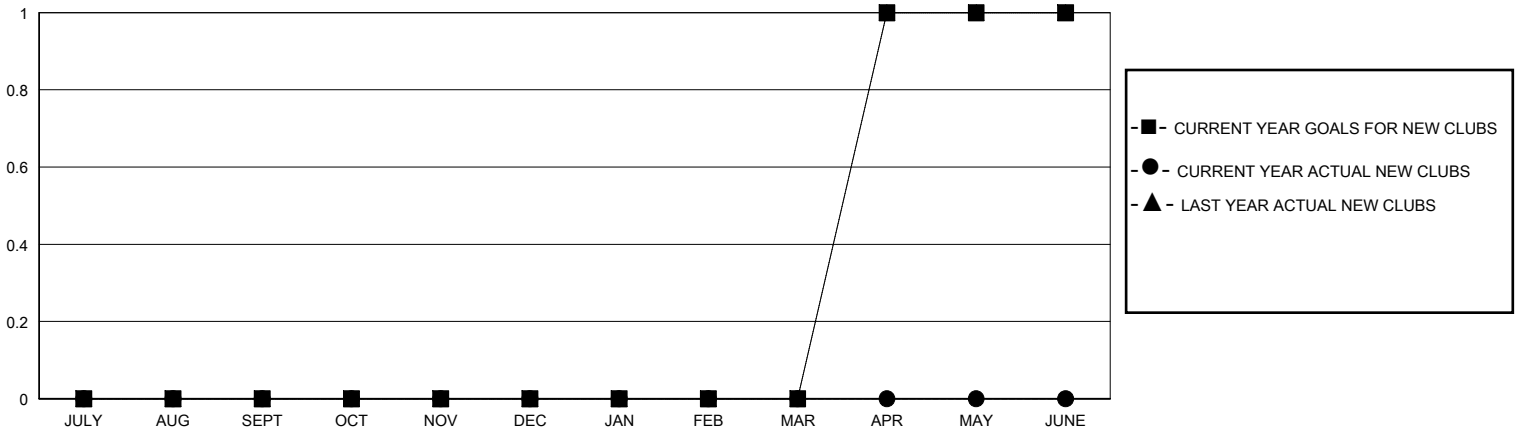
GMT:

LOCATION CALIFORNIA

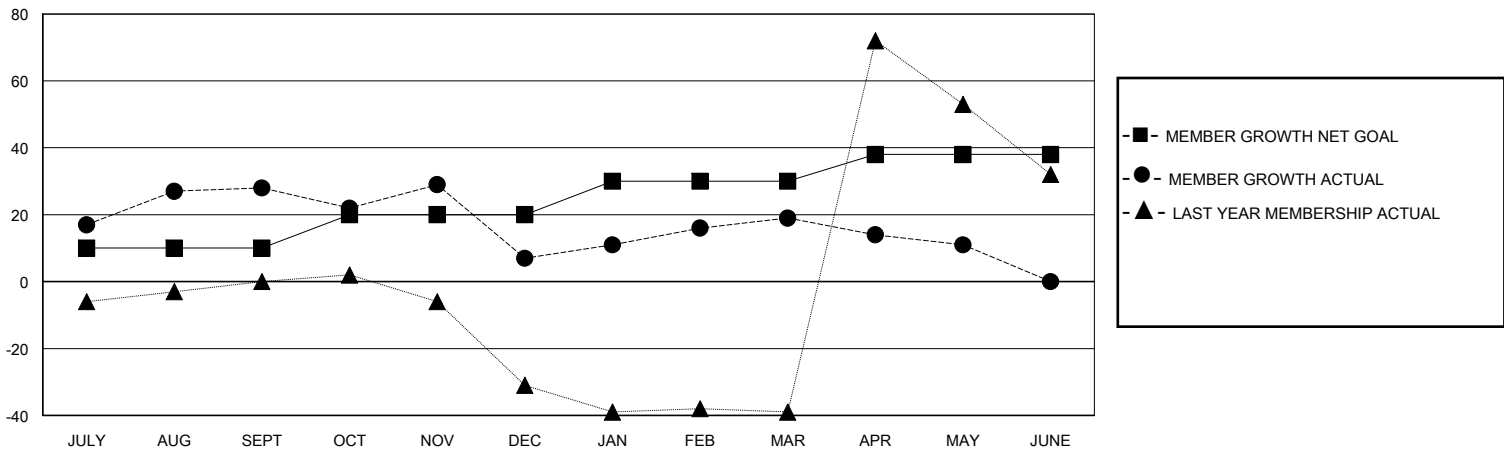
GMT CA

Clubs				Members			
RESULTS FOR 2023-2024				RESULTS FOR 2023-2024			
QUARTER	NEW CLUB GOAL	NEW CLUBS	DROPPED CLUBS	QUARTER	MEMBER GROWTH NET GOAL	MEMBER GROWTH ACTUAL	DROPPED MEMBERS ACTUAL (including transfers)
JULY/AUG/SEPT	0	0	2	JULY/AUG/SEPT	10	63	30
OCT/NOV/DEC	0	0	0	OCT/NOV/DEC	10	19	39
JAN/FEB/MAR	0	0	0	JAN/FEB/MAR	10	35	17
APR/MAY/JUNE	1	0	0	APR/MAY/JUNE	8	8	13

GOALS AND ACTUAL NEW CLUBS CUMULATIVE



GOALS AND ACTUAL MEMBERS CUMULATIVE



DROPPED CLUBS: 2	29 CLUBS OF 51 ADDED 1 OR MORE NEW MEMBERS	<u>GENDER DISTRIBUTION</u>	
<u>DROPPED MEMBERS</u>		MALE	733 (52.62%)
DECEASED	20	FEMALE	659 (47.31%)
CLUB CANCELLED	0	TOTAL FAMILY UNIT MEMBERS	439
OTHER	78	FAMILY MEMBERS PAYING HALF DUES	237
TOTAL	98	CLICK HERE FOR CUMULATIVE MEMBERSHIP DATA	